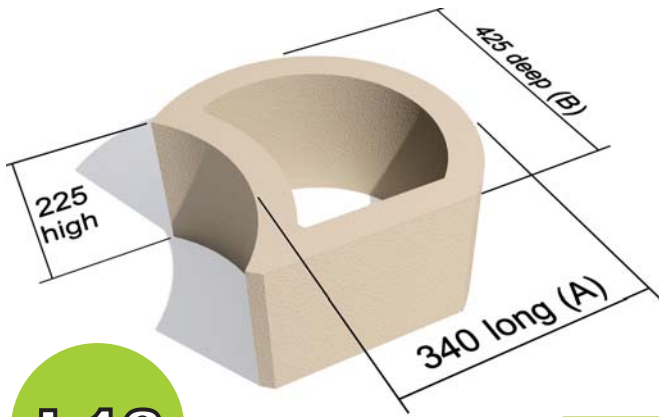


# TERRAFORCE®

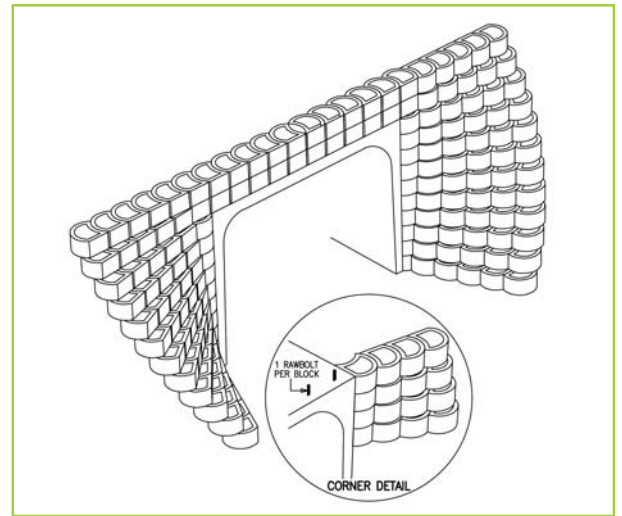
The original, reversible, hollow core retaining block



**L13**

L13 STANDARD

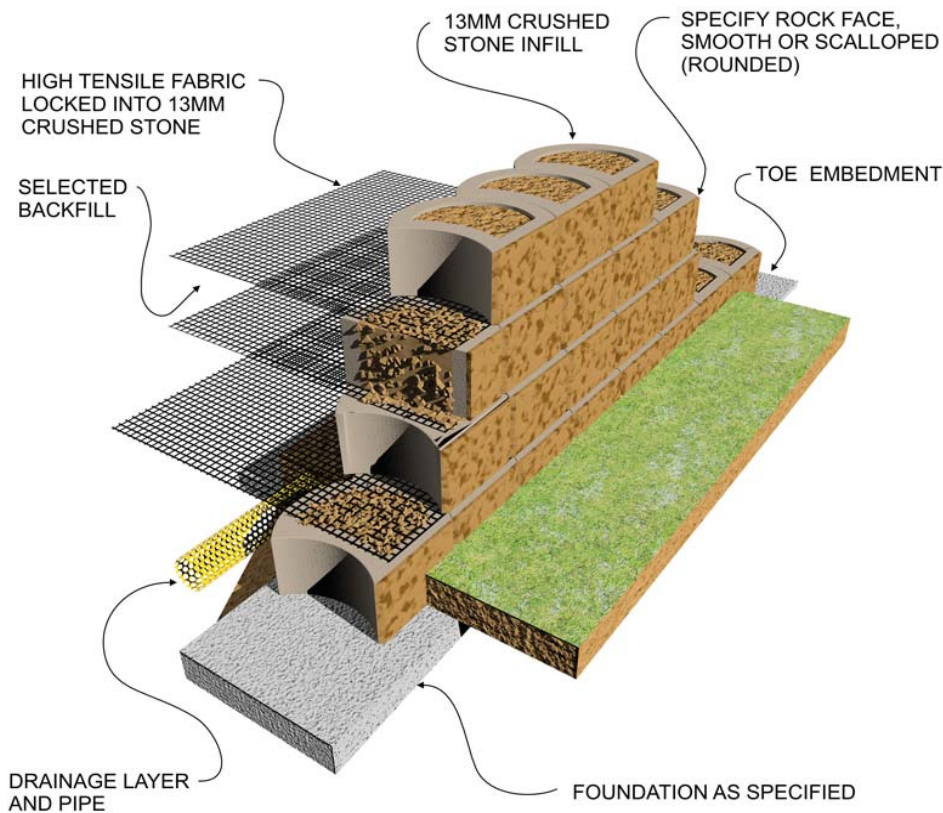
For variations check with your local supplier.



Block	L13
Blocks/m <sup>2</sup> (Measured vertically)	13
Block mass/kg (Average)	32
Block infill volume/m <sup>3</sup>	0.018
Block wall thickness mm	50
<b>Ave. constr. mass kg per m<sup>2</sup> of wall. Single Skin</b>	
When filled with topsoil of 1500kg/m <sup>3</sup>	767
When filled with gravel of 1900kg/m <sup>3</sup>	860
When filled with concrete of 2400 kg/m <sup>3</sup>	977

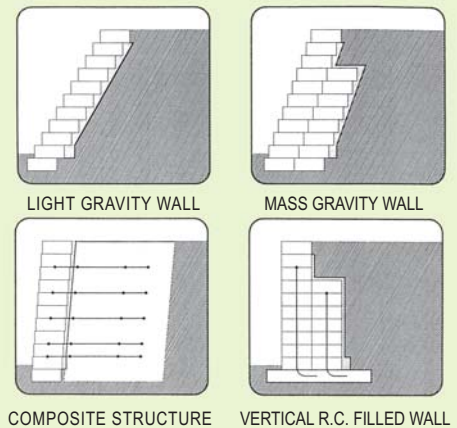


## Composite Retaining Wall (Earth Reinforcement with Geogrid)

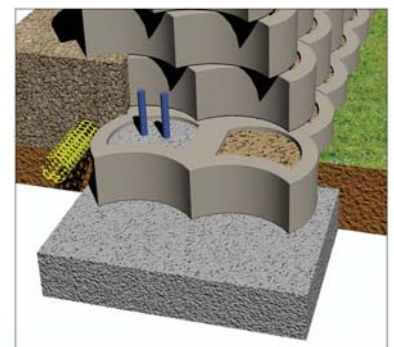
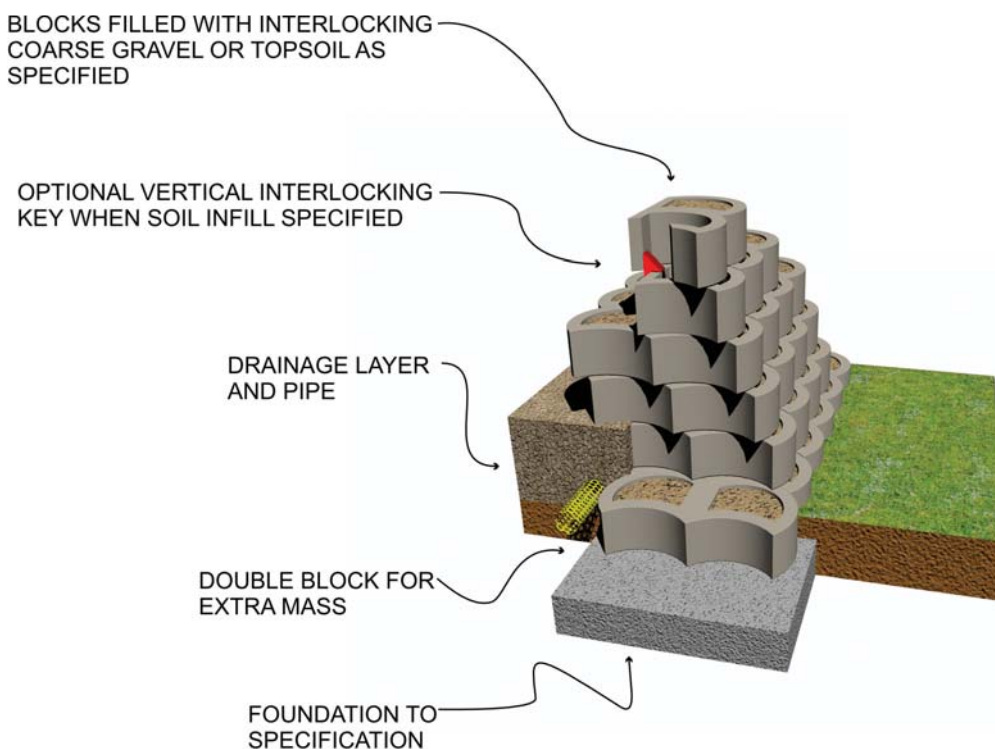


TERRAFORCE blocks have been substantially tested and analysed under field and laboratory conditions and are manufactured under licence by reputable manufacturers on five continents.

The blocks can be used as part of either a gravity system or as the fascia of a geosynthetic reinforced segmental retaining wall structure or as a fascia for a cement stabilized backfill.



## Mass Gravity Retaining Wall



OPTIONAL R.C. INFILL

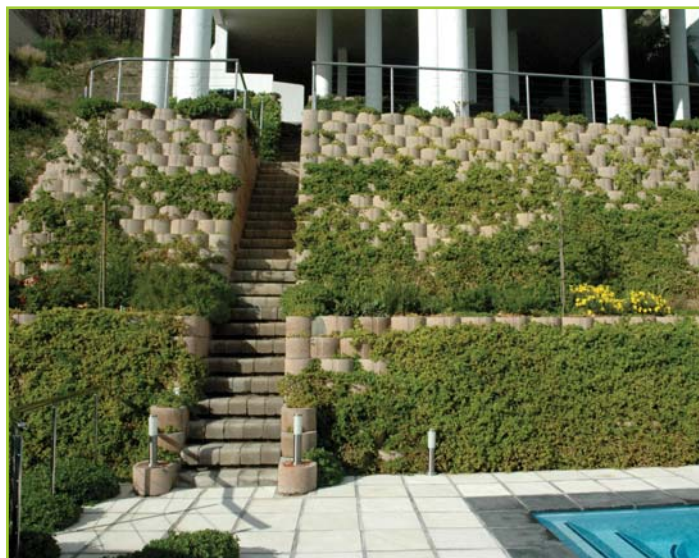
# TERRAFORCE®

The original, reversible, hollow core retaining block

L13



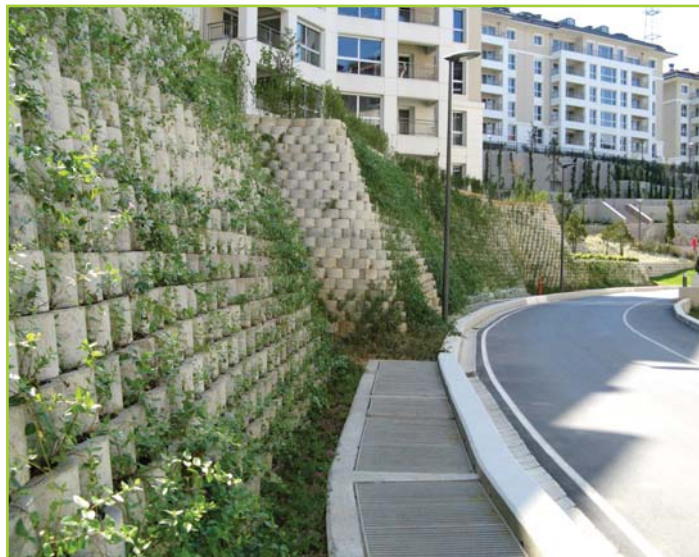
STABILISING OF BEACHFRONT, COMPLETE PLANT COVER



HEAVY GRAVITY RETAINING WITH STAIRS



HEAVY GRAVITY RETAINING 7M HIGH



VERSATILE SOLUTIONS



COMPOSITE RETAINING WITH TERRACING AND PLANT COVER



COMPOSITE WALLS WITH A ROUND FACE FINISH